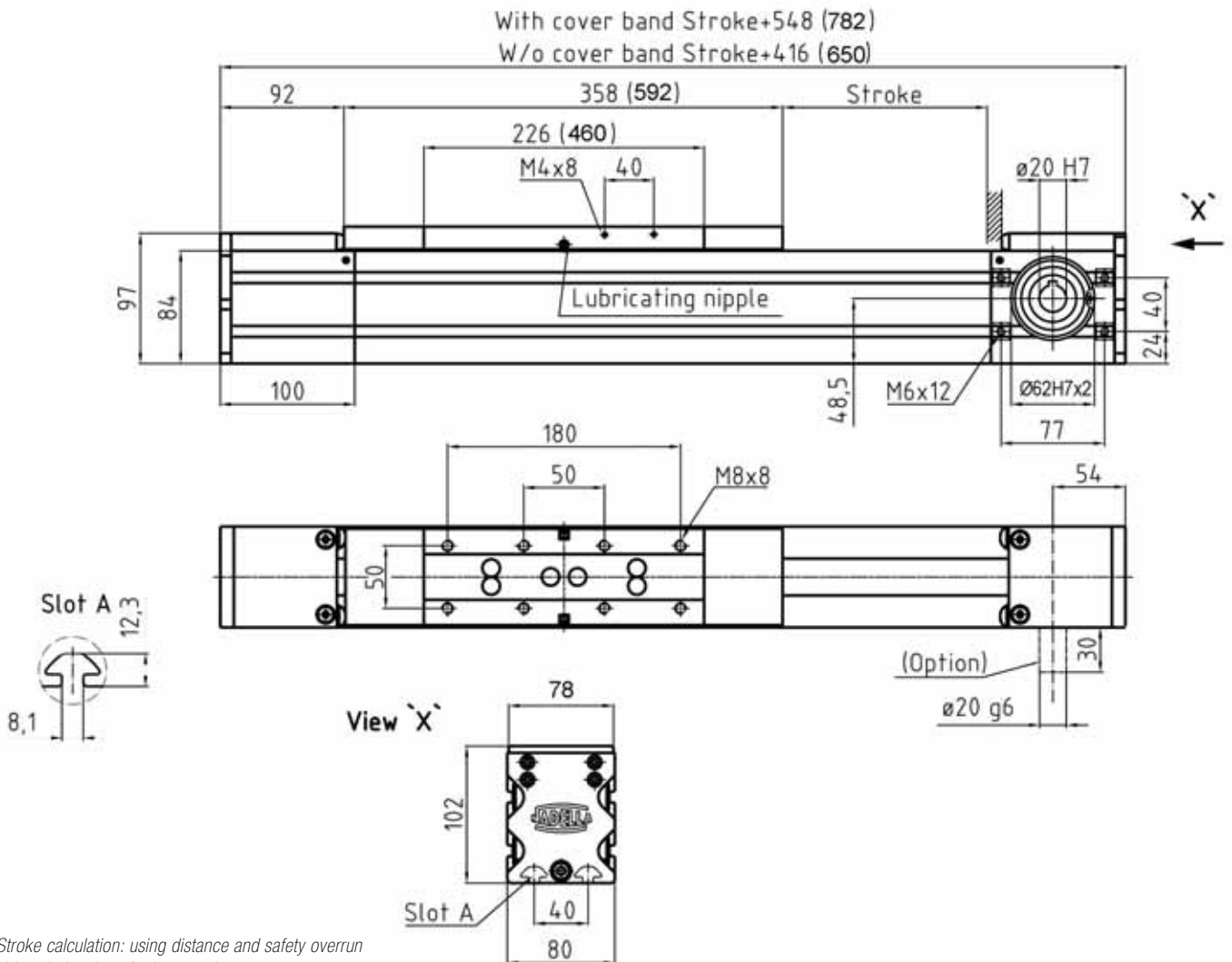
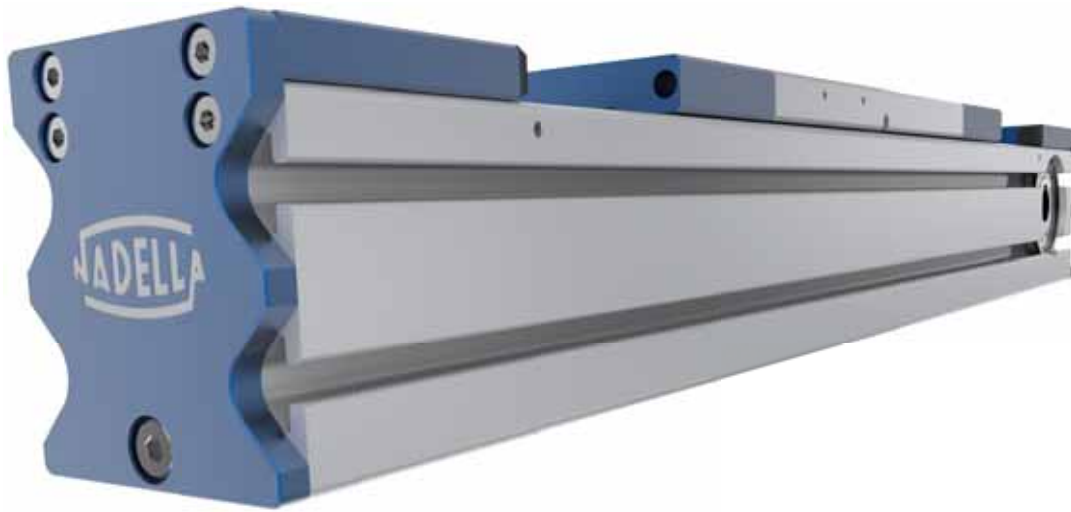


BASIC-LINE AXNP-Z

AXNP 80-Z

Actuator with toothed belt and roller or rail guide.

Rust-resistant version available.

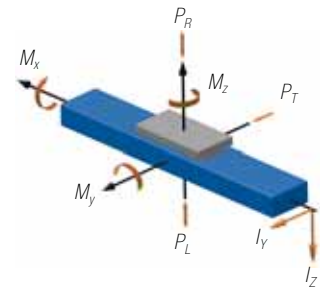


Stroke calculation: using distance and safety overrun
Values in brackets for long carriage
Motor connection see chapter Drive adaption

4.4

LOADS AND LOAD MOMENTS*

Loads (N)	Roller guide LR 42.10		Rail guide B 20	
	dyn.	stat.	dyn.	stat.
P_R	1735 (2950)	3000 (5100)	4300	15000
P_L	1735 (2950)	3000 (5100)	4300	15000
P_T	2950 (5000)	5250 (8900)	4300	15000
Load moments (Nm)				
M_x	36 (60)	62 (100)	43	150
M_y	83 (245)	143 (425)	205	730
M_z	146 (365)	260 (635)	205	730



* The dynamic load of the guide system is based on a nominal lifetime of 54000 km
Values in brackets for execution with long carriage. Long carriage with rail guide upon request

TECHNICAL DATA

Max. speed	max. 10 m/s (LR 42.10)
Repeating accuracy	± 0.05 mm/m
Actuation	Toothed belt 32 AT10
Max. dynamic working load	1450 N
Feed rate per rotation	180 mm
Idle-running torque	1.0 – 1.2 Nm
Moment of inertia	5.237 kgcm ²
Max. length overall	6 m (one-piece) ¹⁾
Geometrical moment of inertia I_y	198.5 cm ⁴
Geometrical moment of inertia I_z	207.4 cm ⁴

¹⁾ Major length upon request, 8 m in one piece dependent on availability

MASS

	Roller guide LR 42.10	Rail guide B 20
Basic mass	8.5 kg	8.5 kg
Mass per 100 mm stroke	1.00 kg	1.1 kg
Slide mass with cover band	3.2 kg (6.4 kg)	3.1 kg
Slide mass w/o cover band	2.7 kg (3.1 kg)	2.7 kg

Values in brackets for execution with long carriage